

Trilogy100

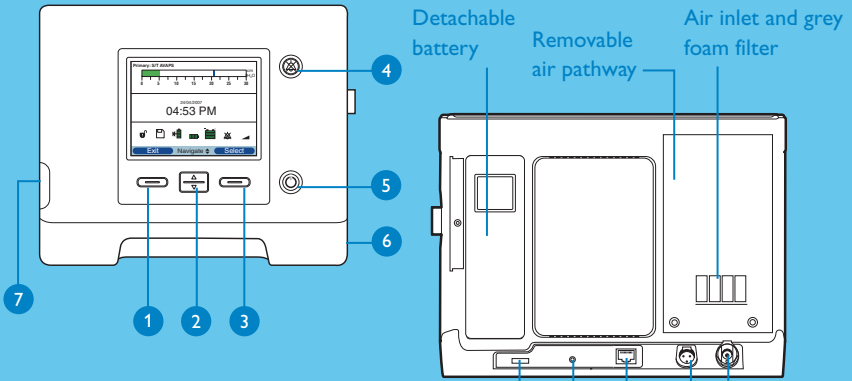


Quick start guide

- 1 Overview
- 2 Circuit set-up
- 3 Set-up screen
- 4 Prescription set-up

1

Overview



- 1 Cancel action or exit menu
- 2 Navigate menus or change settings
- 3 Select/modify/confirm parameters
- 4 Audio pause button
- 5 Start/stop button
- 6 AC power inlet
- 7 SD card to download ventilation data

- Detachable battery
- Removable air pathway
- Air inlet and grey foam filter
- Remote alarm connector
- Ethernet connector
- External battery connector
- Serial connector – to connect to a computer or Alice polysomnographs
- Oxygen valve port (flow source up to 15 LPM)

Symbols and icons



Prescriber environment, full access mode



SD card inserted in the ventilator



Audio pause active



Ramp active



Status of detachable battery



Status of internal battery



Status of external battery



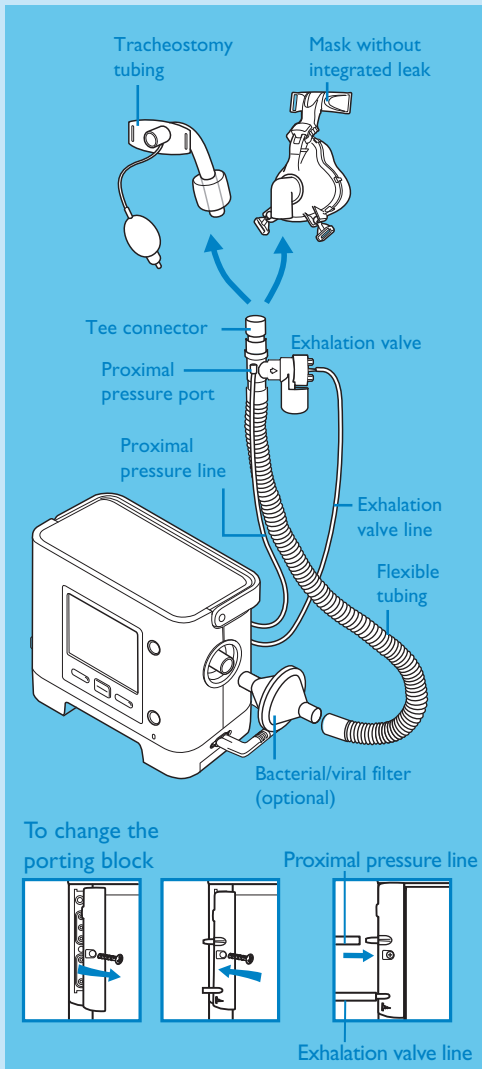
Battery is charging

2

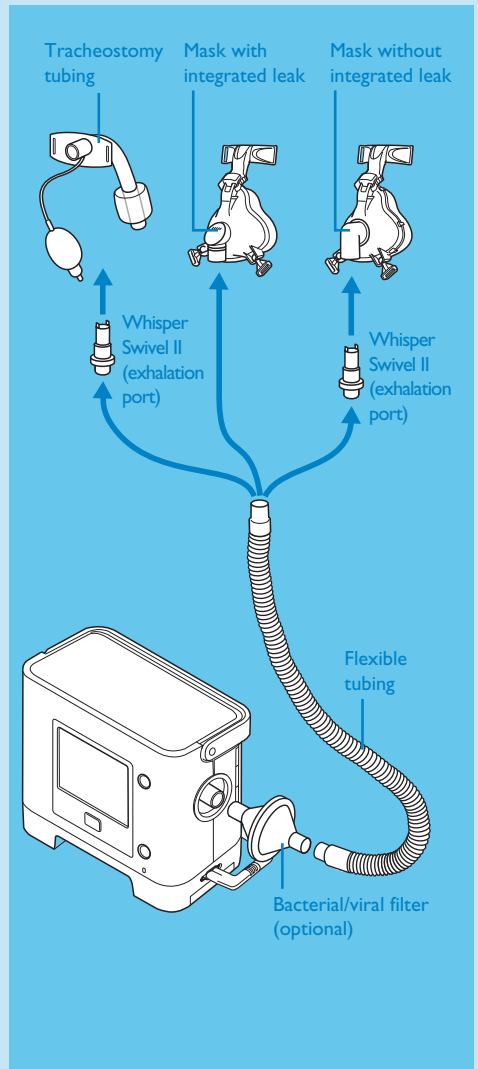
Circuit set-up

Before operating Trilogy100, you need to configure the circuit type.

Set-up with exhalation valve



Set-up with exhalation port



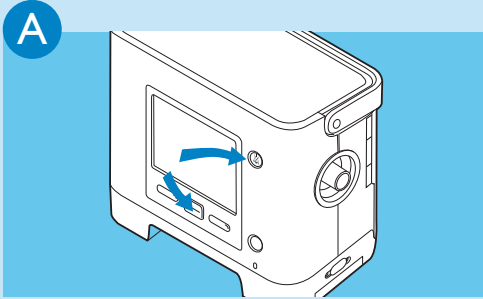
Please check that circuit type is properly configured.


3

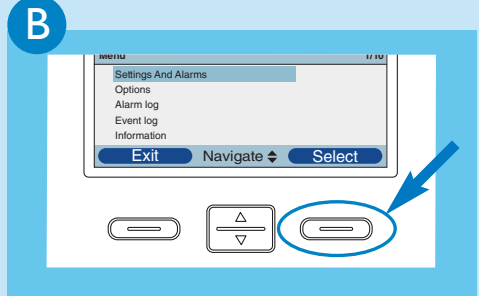
Set-up screen

Setting the Active or Passive circuit

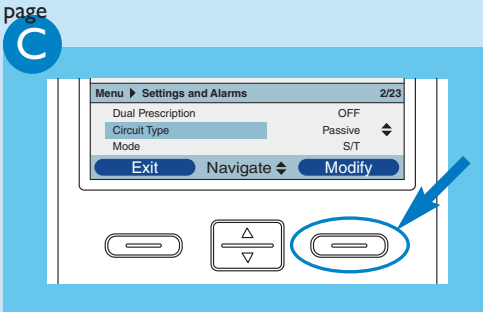
Make sure Trilogy100 is turned off before taking the following steps



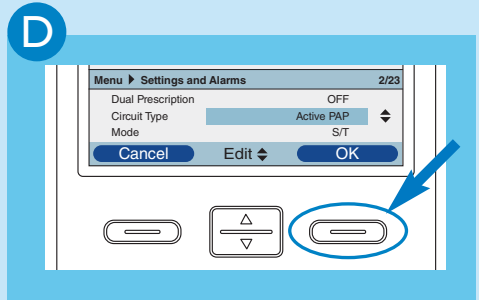
Press and hold  and  for a few seconds to access **Set-up**





Select **Settings And Alarms**



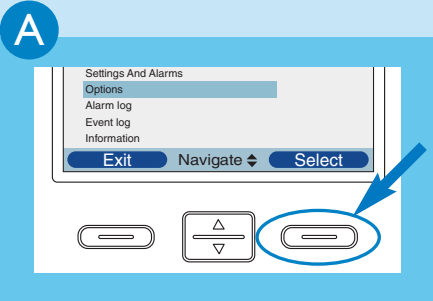
Navigate to **Circuit Type** and press 



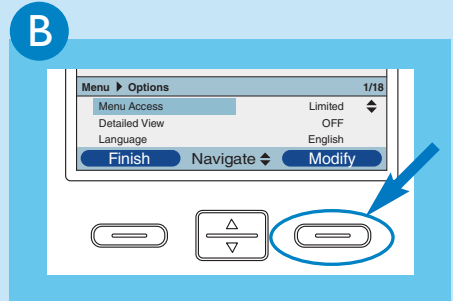
Use  to choose **Active PAP** (exhalation valve set-up) or **Passive** (exhalation port set-up) and then press  twice to confirm

Setting menu access

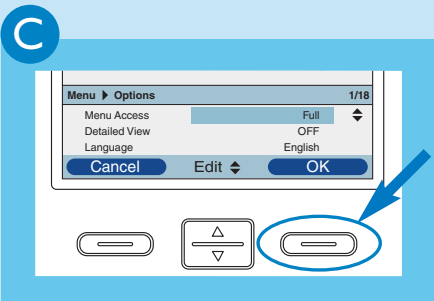
To enable full access to the settings



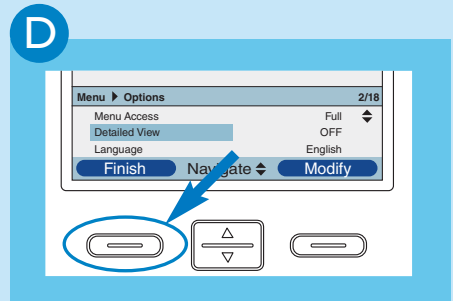
Navigate to **Options** and press **Select**



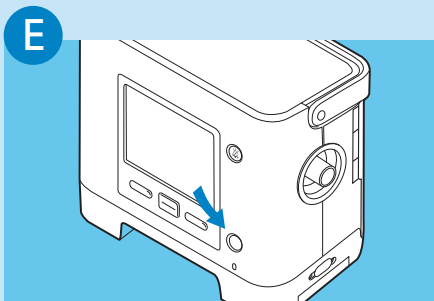
Press **Modify** to enter **Menu Access**




Use  to choose **Full** or **Limited Access** and press **OK** to confirm



Press **Finish** and **Exit** to return to **Initial Screen**

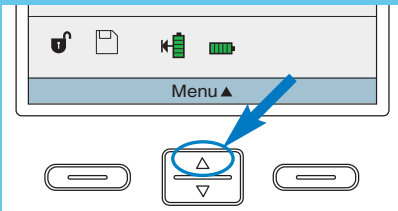


Press  to begin therapy **or** continue navigating through the menu to set-up the ventilation parameters

4

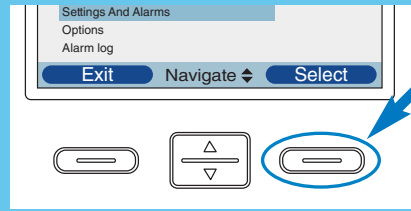
Prescription set-up

A



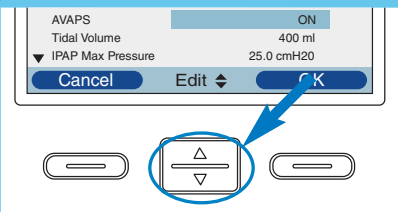
From main screen, press **Menu**


B



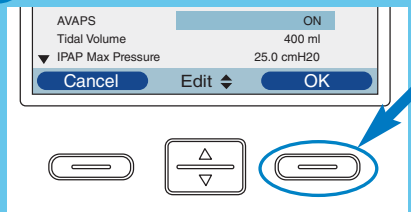
Select **Settings And Alarms**

E



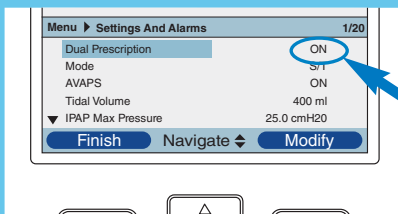
Use  to change the value or status of setting

F

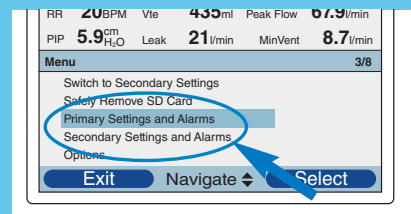


Press **OK** to validate new setting

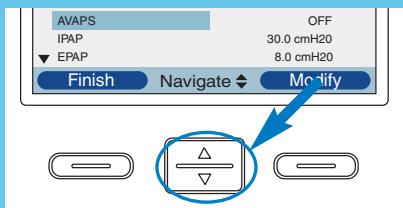
Dual Prescription




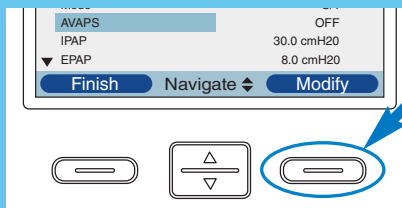
If **Dual Prescription** is enabled, both prescriptions need to be adjusted as previously explained




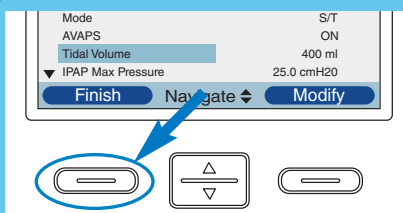
Two prescriptions to set

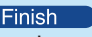

C

Scroll up and down using  to navigate through the settings and alarms

D

Press  to change the parameter highlighted in blue

G

Press  and  to return to the main screen

**Philips Healthcare is part of
Royal Philips Electronics**

How to reach us

www.philips.com/healthcare
healthcare@philips.com
fax: +31 40 27 64 887

Asia
+852 2821 5888

Europe, Middle East, Africa
+49 7031 463 2254

Latin America
+55 11 2125 0744

North America
+1 425 487 7000
800 285 5585 (toll free, US only)

Philips Respironics
1010 Murry Ridge Lane
Murrysville, PA 15668

Customer Service
724 387 4000
800 345 6443 (toll free)

Respironics Europe, Africa, Middle East
+33 1 47 52 30 00

www.philips.com/respironics

Respironics, Trilogy, Whisper Swivel, and Alice are trademarks of Respironics, Inc. and its affiliates.



© 2009 Koninklijke Philips Electronics N.V. All rights are reserved.

Philips Healthcare reserves the right to make changes in specifications and/or to discontinue any product at any time without notice or obligation and will not be liable for any consequences resulting from the use of this publication.

Geyer WMB 1/19/09 MCI 4102101 PN 1059349